

These preparatory classes will concern the **sciences** (Smart Structures, Materials and Energies of the Future), **the life sciences** (Health/ Biotechnologies and Agroecology/Nutrition), **letters/humanities** and **economics-business** (transversal). For the student, this will correspond to an additional 200 hours of courses a year.

From learning centre to learning network and the construction of a cyber university

Our project is to organise several "learning centre" type facilities in a network for the students on the different campuses. This is not a turnkey project and it will require several steps with a genuine structural approach; thus it is a transformational process:

- As it entails transforming places such as libraries and multimedia rooms by equipping them as "learning centres" (access to varied resources beyond those provided by common documentation departments, a friendlier environment, etc.) and then linking them to the network;
- As it also has the objective of transforming the offer of education via a digital university open to the general public. It means that the teachers will have to use new pedagogical methods to communicate their knowledge and know-how to students by using digital tools in their teaching.

The integration of teaching, learning, documentation and technological training forms the core of this project that remodels the relation between education and libraries, narrows the frontiers between teaching and documentation, and permits dynamic and shared working methods (group work and the production of documents, multimedia tools).

Our **learning network** will make use of symbolic "network nodes" on each of the main campuses.

This project will be part of the construction of a genuine **cyber university**, involving the modernisation of teaching tools (mixing face-to-face and e-learning, pod-casts, self-tests, I-pads, a Moodle platform, e-tutoring, etc.) leading the student to become an actor in their education. By making use of existing resources (e-learning centre, Eduter institute), we also propose renewing our offer of e-learning courses for students studying in the framework initial education by correspondence (in France and abroad) or in continuing training (employees) or persons unable to free themselves (army, prisons). We intend to consider **e-learning as one of the levers of our mission to provide lifelong learning**.

Towards better adaptation to professional life

Several actions will be implemented to strengthen the adaptation of young graduates for professional life, by taking advantage of our regional roots and our links with employers' organisations. Orientations for development have already been programmed: generalisation of the competence portfolio for all the students, generalisation of professional training courses for all BSc students, an approach by competence as a factor of employability for graduates and, lastly, the systematic development of innovation culture and creating start-ups in training curricula. Large scale strategic workforce planning will be made possible by setting up a strategic observatory of high level competences, a genuine tool of strategic intelligence in Bourgogne / Franche-Comté.

PhD training: a priority in phase with our clusters of excellence

The PRES Bourgogne Franche-Comté pursues a wilful policy to ensure its mission to provide education for PhDs, with training for and by research, and above all that of preparing the integration of PhDs in both public and private research organisations. **The joint Doctoral Schools of Bourgogne et Franche-Comté** will belong to a Doctoral College of the PRES whose mission will be to provide training for PhDs to prepare them for their posts, by privileging a **mix of experiences** (teaching, research, R&D services in the private sector), and **double competences** with the generalisation of training in economic intelligence and entrepreneurship, with possible double degrees (with the possibility of acquiring an Master of Business Administration).



The actions organised in the framework of IdEx concern:

- **support to our clusters of excellence:** allocations for PhDs, post-doctoral studies, assistance for stays and training courses abroad,
- the acquisition of specific competences in preparation for working in companies or starting one up;
- setting up annual **multidisciplinary seminars** to encourage exchanges between disciplines, and **participation in integrated projects** in phase with our themes of excellence.

3.6. The social responsibility of the FU

The FU's social responsibility comprises two orientations: setting up a sustainable development policy at the scale of the PRES and in-depth work to link Sciences, Cultures and Cities, via the deployment of scientific and technical culture.

A sustainable development plan for our campuses

The development of the PRES campus requires choices that must prepare the future for the generations of tomorrow. Hence the creation of the long term "Sustainable Environment and Development" plan (EDD) that has 3 main objectives: limit the impact of activities on the environment and develop modes of sustainable management and operation; train all the students and make them aware of sustainable development; encourage research efforts in Sustainable Environment and Development.

Through time this plan aims at setting up Agenda 21 of the PRES Bourgogne Franche-Comté, around six key orientations:

1. **Instilling awareness and training students, personnel and the business world** – exploitation, at national and international levels, existing training courses in the area of Sustainable Environment and Development and guiding students towards these disciplines (via the cross-disciplinary hub).
2. **Exploitation of research** – the creation of a benchmarking structure specific to sustainable development, with a panel of experts to coordinate reflection on the environment and sustainable development.
3. **Transport and mobility** - definition of a transport policy aimed at reducing journeys and privileging modes thrifty in energy and greenhouse gas emissions. The arrival of the tram network on the Dijon campus in 2013 will permit rethinking accessibility to the campus and strengthening soft modes.
4. **Environmental Impact of the PRES** – management policies relating to energy, water and wastes (harmful/harmless), already in place in certain establishments, will be strengthened with the development of indicators.
5. **Social policy** – it will satisfy criteria of diversity, parity and equal opportunities; "living well together" with a greater number of personal services; improving prevention and health; solidarity with the regions, etc.
6. **Strategy and governance** - a "Committee for a Sustainable and Community Campus" with global evaluation tools (annual report on monitoring actions, all sectors confounded); taking SD into account in policies of investment, purchasing, the operation of the establishments; a policy of global management (energy, water, purchasing, wastes, mobility, biodiversity, etc.).

In order to ensure the perpetuation of this plan, the establishments of the PRES will devote about 0.5% of their consolidated budget (including payroll) and its deployment will be implemented in consultation with their partners: conurbations, regions, CROUS, companies and associations.



Sciences and cultures for the City

The establishments of the PRES have been committed for 10 years to diffusing scientific culture and dialogue with their environment, through commercial exploitation and through the diffusion of their research to different sectors of the public (social and cultural exploitation). This strategy is part of the objective to develop a knowledge society as recommended in the Lisbon Treaty.

Procedures to ensure commercial exploitation and training related to the dissemination of the latest advances in research, science and technology in the territory have been implemented. However, the aim is for scientific culture and cultural action to reach people outside the scope of these procedures due to their habits or social position (for example, young people in disadvantaged areas). It can assist the development and **transfer of knowledge to the population and stimulate vocations**.

This objective will take the form of mediation between researchers in closer contact with different sectors of the public: schoolchildren (the "*Expérimentarium*", the "*Fabrika sciences*"), families and the general public (science festival, research night, etc.), students, and also specific professional fields.

For the next 10 years, the PRES intends to strengthen **dialogue between science and society** with businesses that develop new environmentally friendly processes and products (SD compliant), with local authorities, and with citizens relating to their daily life (their food, travel, choices, etc.) so they appropriate innovations stemming from research.

We also want to fuel social dialogue in our territory and innovate in the way we live together with new means of communication (new links, different living spaces, the question of our relations with each other, etc.). This constitutes a genuine societal approach that completes our SD policy.

We will **develop links with art schools** to strengthen our action to promote links between science and culture, especially by setting up a dual competence and double curriculum or research on the theme of art and town planning.

3.7. An international University

Regarding international positioning, the objective is to reach the highest level and rival the major regions of Europe. We aim to increase our international attraction: from 12 % foreign students in 2010, to 15% in 2015, and 20% in 2020.

The key figures at T₀:

- 5,000 foreign students
- 2,000 new students admitted per year
- 2,000 students on stays in 60 countries
- 500 partner universities

With the selection of our Initiative of excellence, we will implement all the tools and resources necessary to welcome researchers and students according to the best **international standards**: international courses, induction kits including living and study conditions, insurance and bank information, etc. We shall use every means to attract foreign researchers to participate in scientific partnerships and international courses. We shall make students with other mother tongues "ambassadors" who will communicate the quality of our courses and our capability as hosts to their home countries. It is on these qualities that the attraction of our establishments, regions and country depend.

We shall deploy our **network of strategic partnerships** (China, Malaysia, Thailand, Indonesia, Chile, Latin America, Eastern Europe, the Mediterranean, etc.) while taking maximum advantage of cross border partnerships with Lausanne, Neuchatel, Fribourg and Geneva (*cf. Strategic Lever 5*). To achieve this, we shall use the offices of



research organisations abroad, and organise new courses abroad and courses given in English, notably on our French campuses.

International courses and excellence

The PRES aims at excellence and this attraction must be woven around and with headline programmes such as Erasmus Mundus, External Cooperation Window, Tempus, AUF, Atlantis and other types of OMJ programme regarding education and with the tools of the 7th PCRD regarding research (Network of Excellence, Marie Curie Training Network, STREP, etc.). and other international programmes: STIC-ASIE, PUF, PICS, etc. The PRES already coordinates two Erasmus Mundus projects in computer vision (VIBOT) and in Language Sciences, and is involved in other calls for projects: OMJ Master, OMJ PhDs, Erasmus Mundus (plant biology at Master's level, Computer Vision at PhD level), AUF (Master's FLE in Algeria, Master in e-learning with Cameroon). Furthermore, through its different laboratories, it offers an increasing number of theses (170) co-supervised with 40 countries.

The PRES is currently very active in offering a double degree with partners in Asia (Malaysia, China, Indonesia, Thailand) and in the Mediterranean basin (Lebanon, Algeria), French-speaking Africa (Cameroon) and Latin America (Colombia) and will continue to privilege its development in these territories.

This development could also take the form of a delocalised campus (an approach already started in Malaysia) with courses given face-to-face and by e-learning.

Increasing our attraction also consists in enhancing our offer of academic mobility by proposing turnkey international curricula (Erasmus, integrated curriculum, double degree and Erasmus Mundus) to our students with strong encouragement to study abroad for at least one semester of BSc and Masters studies.

Regarding research, the activity of the PRES has resulted in 31 contracts over the last 4 years in the framework of the 7th PCRD, thereby demonstrating the excellence and dynamism of our laboratories.

Tools to ensure our attraction

Building an international students' centre on our 2 main campuses, these centres must be places of cultural exchange, conviviality and sources of information for the students on the campus: rooms for meetings, relaxation (billiards, table tennis, chess, cultural activities, etc.), Internet connections, a reading room with local and international press. These centres will include services and information sessions for incoming foreign students and provide every service: residence cards, job seeking, labour regulations, declaration of resources, multiple entry visas, context the Schengen area, etc. For future departures, the information sessions will be on travel conditions, insurance, visas, etc.

Residence for foreign researchers (in year 4)

This residence is planned to be functional and hospitable for foreign guest researchers and teachers, for stays from a few days to a full academic year.

This facility, financed in the campus operation, has a total floor space of 1,600 m² and is intended to accommodate 130 people a year in forty dwellings (from one room to two-roomed flats) fully equipped to hotel standard. It includes common services: cafeteria, laundry, meeting room, reading and recreation spaces, drink and snack machines, all in the spirit of a **faculty club**.

Twenty comfortable rooms and apartments will be reserved for researchers in Besançon, in the university property in the city centre.

High-level language teaching

As the Masters courses are given in English, bilingual teacher-researchers will be recruited as will be administrative personnel for double Masters (with customised management of reception, assistance for accommodation, assistance with administrative procedures) and personnel for the international centres.



2 centres for language teaching and FLE

The Applied Linguistics Centre (CLA) (Besançon) is a leading centre for the practical teaching of French (intensive and semi-intensive training courses, language, culture and society) and foreign languages (German, English, Spanish, Italian, Arabic, Portuguese, Chinese, Japanese, Russian) with modern tools and methods: laboratories, communication methods, self-learning.

The International French Studies Centre (CIEF) (Dijon) proposes a range of courses in French as a foreign language (FFL), French language, culture and civilisation modules, and additional evening courses for FFL, as well as international summer courses.

Key figures in year 0:

- **5,500 trainees** per year,
- **120 permanent staff** and outside personnel,
- Specific services linked to ensuring the **quality of trainees' stays**: reception, accommodation, cultural activities, relations and exchanges, media resource centre, education ICTs, communication;
- **Almost 4,000 m² of facilities devoted to teaching-learning** in a specific building in Besançon city centre (CLA): 32 classrooms; a resource centre and workshops for working in autonomy; a room for receptions and events; 3 multimedia laboratories; a cafeteria;
- **An international students' residence** (Dijon): offering quality accommodation with 300 bedrooms and 100 flats (one room to 3 room flats). In Besançon, the Cité Internationale will open and offer 200 comfortable rooms and activities in a specific site in the city centre in 2011.

A Chinese study centre

The Chinese Study Centre is a place where French and Chinese students can meet. The centre implements innovative and evolutive teaching techniques, developing didactic research and offers specific courses for different sectors of the public.

The Chinese Study Centre also organises related activities: scientific symposiums, course management, and there is even a "Chinese Bar" (a convivial place where students and teachers can obtain assistance for preparing their stays in China). The opening of the Confucius Institute in Besançon in 2012 will complete the scheme.

A winning trio formed by the PRES, companies and our foreign partners

Furthermore, the PRES, companies and foreign universities already form a winning trio at international level. The PRES has already forged many education and research partnerships with Russian (joint laboratory and technology transfer centre), Swiss (joint European laboratory + UMI in planning phase), Chinese (ANR), Japanese (UMI, in the fields of nano-micro systems, mechatronics), Malaysian (double degree and co-supervision), East European (mobility) and Mediterranean (delocalised degrees, co-supervision) and American universities (exchanges, joint research programmes). The number of these different partnerships (more than 150 in all) is destined to increase synergy with our regional companies and authorities. In line with the initiatives taken in the framework of our Erasmus Mundus Excellence programs (private/training partnership for sponsoring certain students), we shall reinforce the involvement of industrial partners in our courses, giving foreign students the possibility of attending professional training courses in industrial companies and by ensuring that our students studying abroad receive similar opportunities.



Focus: PRES /SEB / China

The company SEB, installed at Selongey (21), organised a meeting in December 2010 between its R&D team, the PRES and the representatives of the University of Science and Technology of Huazhong in China to start-up a high potential program between SEB, the research teams of Chinese universities and those of the PRES Bourgogne Franche-Comté. This programme is now under full steam for the benefit of all concerned.

A promising cross-border partnership with Switzerland

For the PRES Bourgogne Franche-Comté, Swiss universities constitute important and natural partners in a large number of areas, especially since we benefit from easy and rapid access to (TGV, motorways) to the cities of Lausanne, Geneva, Bern, Neuchatel, Zurich, etc.

Currently, collaborations are in place or under development with 14 Swiss universities:

- In the French-speaking part of Switzerland: With the EPFL (Ecole Polytechnique Fédérale de Lausanne), UNIL (Lausanne), Institut de Biochimie (Lausanne), Université de Science (Geneva), IUFE (Geneva), Université de Neuchâtel, Ecole Hepia (Haute Ecole du Paysage, d'Ingénierie et d'Architecture de Genève) and the Musée d'Histoire Naturelle (Geneva)
- In the German-speaking part of Switzerland: With the EMPA (Materials, Science and Technology at **Dübendorf- St. Gall-Thoune**), PSI (PSI Paul Scherrer Institute in Bern), the University of Applied Sciences (Bern), ETH (Ecole Polytechnique Fédérale in Zurich), University of Zurich and University of Fribourg.
- In the Italian-speaking part of Switzerland: With the University of Lugano.

These collaborations obviously include doctoral courses. Furthermore, joint doctoral schools organised on the scale of the greater region of Bourgogne Franche-Comté incorporate colleagues and teams from the universities of Lausanne, Neuchatel, Fribourg, Zurich, Geneva.

Partnership is particularly important on the scientific level **with the EPFL of Lausanne**, a university recognised as being one of the most prestigious higher education establishments in Europe. To date, the PRES Bourgogne Franche-Comté and EPFL have already collaborated in numerous fruitful projects, especially in the framework of European research projects, and through the organisation of a Joint International Unit, in our areas of excellence (nanosciences, photonics, materials, molecular chemistry, imaging, and health applications in particular, agroecology, archaeology, biodiversity, application to the climate, landscapes and ecosystems, etc.).

Our PRES is already involved in a **privileged and ambitious collaboration with the EPFL** that, with the selection of our Initiative of Excellence, will result in a structural and lasting partnership.

Furthermore, our **international benchmarking** approach has led us to consider the EPFL as a source of inspiration for our project to set up the Federal University of Bourgogne Franche-Comté, especially regarding technical and university education in the same establishment and a federal architecture, making it possible to structure the grouping of several establishments from the functional angle.



Focus: a project to set up a French-Swiss Institute of learning and cognitive skills

Team: researchers from the universities of Geneva, Bourgogne, Franche-Comté and Fribourg.

Project supervised by a member of the IUF.

Research theme

Specialised in the psychology of learning processes and their troubles, this team focuses on learning difficulties at school by considering that they often stem from the first steps of knowledge building, and not from high-level metacognitive processes. This research should lead to modifying pedagogical strategies aimed at these pupils, via early screening of children with difficulties at school and by remediation programs designed to provide assistance in forming these automatic cognitive reflexes.

Key figures:

59 scientific publications during the last four years.

16 research contracts awarded or in progress since 2002.

The PRES Bourgogne Franche-Comté hosts the International University Conference of in April-May 2011

Objective: to formulate a joint declaration to be handed to world leaders at the G20 summit to be held in Cannes in November 2011.

The CPU (Conference of University Presidents), an association federating French universities, mandated by the French government to host the event, has entrusted the organisation to the PRES Bourgogne Franche-Comté.

The declaration of this Conference will concern "**Sustainable Development and the Knowledge Society. What structure and cooperation for the universities of the 21st century?**"



4. OUR GOVERNANCE

The Initiative of Excellence is driven by the Foundation for Scientific Cooperation (FCS) of the PRES Bourgogne Franche-Comté. An IDEX steering committee will be constituted in this framework.

4.1. The scientific cooperation foundation, the PRES' arm for action

Associating stakeholders in projects

The FCS of the PRES was formed to associate all the partners and institutions contributing missions of research, higher education and innovation in the region. This foundation is thus a completely new model compared to previous types of PRES, with a structure and governance that is tighter, more efficient and more open to economic actors. This 2nd generation structure in France with concrete goals is already in place:

- The Federal University of Bourgogne Franche-Comté is currently a provisional association; its roadmap is already set out; the method and stages of construction of the future university have been defined;
- **The FCS exists** (founded on 15 December 2010). Its objective and governance have been defined in concert with all the partners.

The FCS not only brings together universities and schools, but also university hospitals, national research organisations, local authorities, economic actors (clusters, enterprises, and the chambers of commerce of the two regions).

Its governance is open and tightly knit to ensure efficient action and reaction: the board is composed of an equal number of founding members and external partners. The share taken by economic actors is large and displays a new ambition to build a university driven cluster: the cluster's vision and projects are shared with all the stakeholders, especially the economic actors.

The FCS' missions and the Investments in the Future projects

The mission of the FCS is to promote clusters of excellence and innovation: to this end it collects funds and concentrates and shares the resources made available by the founders, in addition to the resources obtained in the framework of calls for projects.

The FCS drives all the PRES' "Investissement d'Avenir" projects. **All the files have been submitted in the name of the PRES and will be contributed by the FCS.**

It will support the projects and laboratories of excellence selected in the framework of "Investissement d'Avenir" through a policy of medium term incentives in order to position them at the highest level in France and internationally. Thus the possible winners of the responses to the calls for tenders for "Investissement d'Avenir", LabEx, EquipEx and other schemes will operate in project mode within the IDEX and under the responsibility and according to the roadmap of the FCS.

It supports the approach of organising higher education in order to build a large Federal University (50,000 students) federating academic, technological and engineering education in the greater region of Bourgogne Franche-Comté.

The management of the funds obtained for building the Federal University of Bourgogne Franche-Comté will be delegated to the future establishment once it has been created.

It allows the region's major industrial corporations and its SMB to become involved in the project and benefit from the competences of young graduates, the training courses open to their employees, innovations and the transfer of technologies resulting from research.



The Foundation is therefore a driving force for the educative, cultural, social, environmental and economic development of the greater region of Bourgogne Franche-Comté. Lastly, it displays a unified vision allowing all the actors to identify with and rally round a single standard. Our concern is above all one of efficiency and speed in the service of our regions in the international competition for development.

The governance of the FCS

The vision of the FCS, its organisation and governance result from close and continuous dialogue with all the partners since January 2010. Its governance is organised so as to permit genuine involvement by public, private and institutional partners.

● The FCS' partners

The **initial founders** of the FCS are the two universities and associated schools (AgroSup Dijon, ENSMM), the two university hospitals, the Anti-Cancer Centre and the French Blood Establishment.

The national research organisations (INSERM, CNRS), the technological universities of Belfort-Montbéliard and Troyes, the CROUS, other higher education establishments (Arts et Métiers Cluny, ESC Dijon, PESM, etc.), clusters and regional authorities could be involved as **associate members**. They can specify their commitments in the framework of contracts signed with the FCS, set out in the form of target and resource contracts. In this case the FCS will function as a board of trustees.

The two university hospitals, the Anti-Cancer Centre and the EFS, all of which provide education and carry out research and technological transfers, shared with the universities, are natural partners in the construction of the PRES "Bourgogne Franche-Comté". These establishments have therefore decided to join the PRES as founding members.

The **national research organisations** have shown particular interest for this initiative that places research and the development of clusters of excellence and innovation at the centre of the PRES. By participating as associate members of the FCS, they will provide the link between the national research and innovation strategy (SNRI) for which they are responsible and the strategy of the site to promote strengthening the clusters of excellence. Thus the CNRS and the INSERM have officially declared their desire to become associate members of the FCS of the PRES Bourgogne Franche-Comté.

The **two technological universities** of Belfort-Montbéliard and Troyes are associated in the construction of the PRES through their existing relations with its founding members, and also through their new projects. Their project to merge in order to form the *Université Technologique du Grand Est*, is a major component of the PRES. These two universities are currently positioned as associate members of the FCS.

The **companies**, which are privileged partners of the PRES' members (EDF, CDC, General Electric, Peugeot, Alstom, etc.) and the **clusters** have displayed strong interest and determined support for the construction of the PRES and could become associate members. Several of them have already expressed the desire to become associate (Dijon Céréales, Caisse d'épargne, Eurogerm, SEB, Crédit Agricole, etc.).

The **regional authorities** concerned, especially the regional councils, have also given substantial support to the project that will become an essential lever for the attraction, and socioeconomic and cultural development of their regions. They will become associate members of the PRES.

New founder members and associate members could be accepted in the FCS at their request and, course, following the decision of the board.

● The bodies of governance

The governance of the **Foundation for Scientific Cooperation (FCS)** is ensured by an open though tightly knit board and an International Advisory committee composed of leading scientists. The International Advisory



Committee prior to the decisions and arbitration of the board guarantees scientific excellence. The strategy of the FCS and its projects are submitted to the Stakeholders Committee and the Academic Committee.

The role of the **governing board** is to decide the strategy of the PRES and supervise its implementation. At its inception the management committee of the PRES was composed of 28 members, conforming to the principle of parity between founder members and external members.

The **President** is elected from the members of the committee.

The **International Advisory Committee** is composed of persons chosen for their scientific competence, with parity between the scientists from the founding establishments and external scientists (in particular, a proportion of foreign scientists 25 % is sought). It gives an opinion on the Foundation's scientific policy, on the distribution of the funds managed by the FCS and the projects supported by the PRES.

The **Stakeholders Committee** includes representatives of all the founding members and partners of the PRES, especially the establishments, all the regional authorities and economic actors, clusters and companies. Its role is consultative.

The **Academic Committee** is a collegial body composed of representatives of teachers, researchers and teacher-researchers, BIATOSS and IT personnel and a significant proportion of students. Its role is consultative.

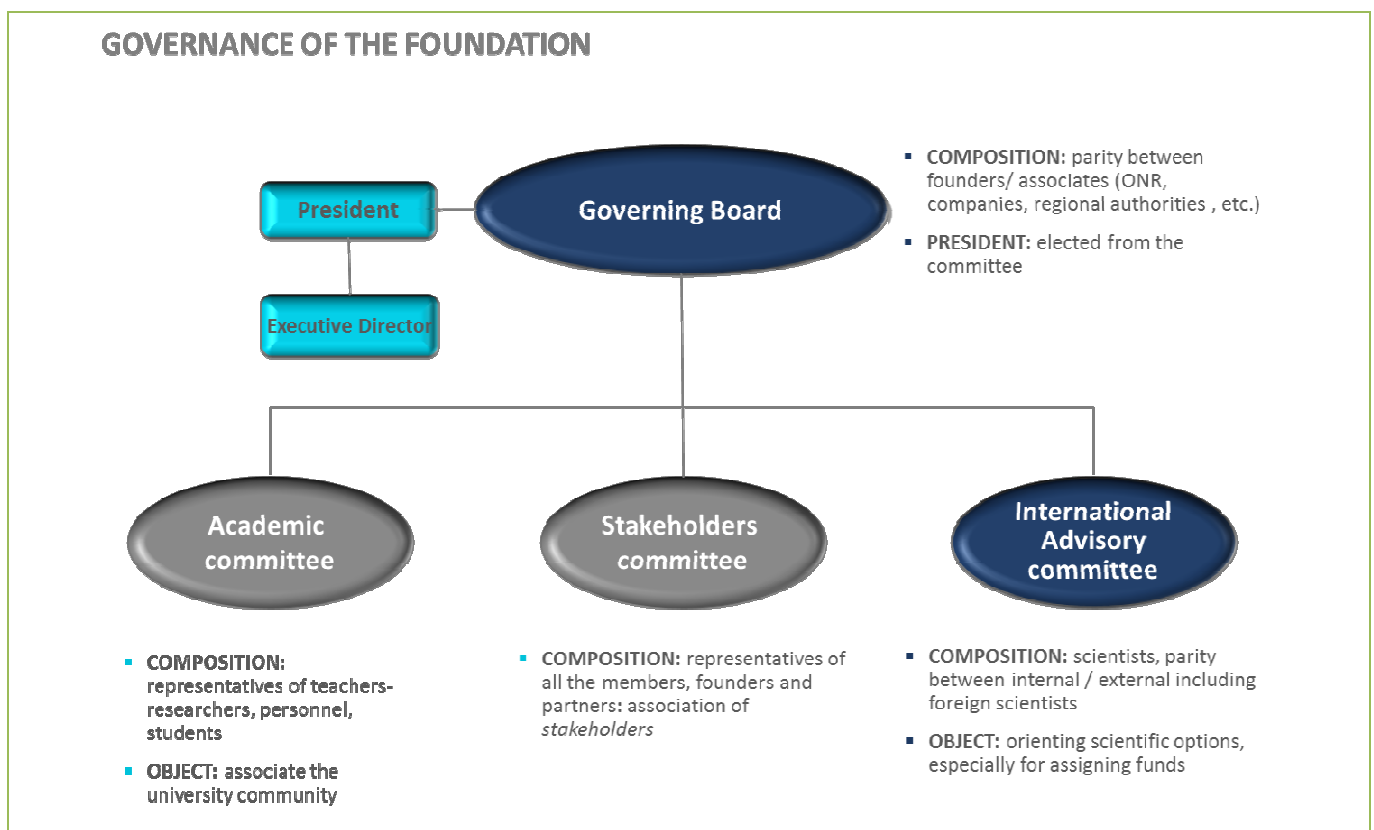


Figure 7: Foundation Governance



Composition of the Board (on being founded): 28 members

Initial founders of the PRES: 12 seats

- uB and UFC: 2 seats each
- Agrosup Dijon and ENSMM: 1 seat each
- 2 university hospitals: 2 seats each
- CLCC and EFS: 1 seat each

Teacher-researchers performing their activity in the PRES: 2 seats

Associate members: 14 seats

- Other establishments and national research organisations: 4 members
- Local authorities: 2 members
- Enterprises and clusters: 8 members

The Presidency and executive of the FCS

The President of the FCS is elected from the board. An Executive Director who they appoint after deliberation by the committee assists them. They implement the policy defined by the board, manage the budget and ensure the administrative management of the FCS.

The resources of the FCS

The FCS has two types of resource. It is endowed with traditional resources which, initially, amount to €2,800,000 including a non-consumable part of €1 million and a portion of the capital obtained in the framework of the IDEX and managed by the FCS.

In all, with the initial contribution from the government and the local authorities, **the starting capital of the Foundation (excluding IDEX) is €5.4 M.**

The yield from non-consumable capital will increase the foundation's annual budget. This operating budget could also be increased by subsidies.

The members of the FCS could endow the FCS with additional financial and human resources, in particular in the framework of their commitments defined in the "Investissement d'Avenir" projects, and subject to their specific performance contracts.

4.2. Steering the IDEX: making fast and shared decisions

The Fondation of Scientific Cooperation, under the responsibility of the **IDEX program director**, will ensure the supervision of the IDEX.

An IDEX Steering Committee will be constituted in the FCS.

The IDEX steering committee will be composed of:

- Representatives of the founding members
- Contributors of major projects selected in the framework of investments in the future (in particular the LabEx)
- Representatives of the companies and clusters involved
- Representatives of partner research national organisations.

Its role will be to ensure the efficient implementation of the IDEX projects and consultation and linking between the different IDEX projects and the strategy deployed by the establishments.



Its role is operational and the perimeter of its meetings can change as a function of the project on the agenda.

The link with the Board and the International Advisory Committee of the Foundation

The tracking and achievement indicators of the Initiative of Excellence projects will be regularly presented to the Stakeholders Committee, then to the International Advisory Committee and the Board of the FCS. Feedback to the IDEX Steering Committee could be ensured the dynamic orientation of the IDEX projects.

The link with LabEx

The governance structure of each LabEx reports to the IDEX steering committee and is endowed with specific budgetary tools to visualise and track its activity. The indicators for tracking and achieving the objectives of each LabEx are regularly presented to the steering committee, then to the International Advisory Committee and the Board of the FCS.

4.3. The trajectory and indicators of our Initiative of Excellence

The 5 strategic objectives of our Initiative of Excellence will be attained following a shared calendar and will be evaluated using quantitative and qualitative indicators of our excellence.

	Year 0	Year 4	Year 10
1. Joining our Forces	Goal reached in 2010: Creation of a Scientific Cooperation Foundation Federation of all the involved actors	Dynamic and responsive governance in action Relocation package for new associate members Joint scientific seal Brand development for the PRES Shared feeling of belonging between student body, faculty, researchers and institutional partners Burgundy Franche-Comté PRES Identity and Quality seals shared amongst all the involved parties	Multiplication of economic partners for the Fondation . A permanent economic, social and cultural prospective tool Clearly defined national and international standing
2. Promoting our excellence in the service of a major societal issue	46% of A and A+ Teams International co-publication rate: 36% Participation in European and International projects : 31	PRES call for projects Deployment of Chairs, PhD and post-doctoral scholarships Relocation Package for invited researchers Excellence support: awards, projects support	80% A and A + teams. The perimeter of our excellence initiative will of course allow non A+ teams to aim for excellence by ripple effect, but also by the established practice of disciplinary actions. Thus new disciplines and new fields are likely to emerge within our Initiative for Excellence Rate of international co-publication: 70% Publication impact of the excellence perimeter: idem Share of European/International projects: doubling of participation in European projects Widening of the excellence perimeter (30% increase in teacher-researchers)



	Year 0	Year 4	Year 10
3. Creating a major federal university 3 b. Student-Oriented Excellence	<p>Prefiguration association created</p> <p>Common doctoral colleges (1.1.2012)</p> <p>Burgundy Franche-Comté local Polytechnicum Institution</p> <p>Creation of an electronic social network</p> <p>1st to 3rd rank in France for campus life (culture, sports, student life)</p> <p>Deployment of campus life and sustainable development project</p>	<p>Burgundy Franche-Comté Federal U: 1st intake starting Fall semester 2013</p> <p>Collegiums set up (2013-2014)</p> <p>Creation of a Burgundy Franche-Comté Polytechnic School (2014)</p> <p>Learning network developed and mastered</p> <p>Residences de la réussite</p> <p>Excellence and double curricula</p> <p>Business intelligence and generalized entrepreneurship</p> <p>Continuing education and joint higher adult education facility</p> <p>Excellence institutes (Sports sciences, Management and Economics Institute)</p>	<p>Regional, national and international attractivity levels: 30% indicators increase of 30%(% registered students/local high school graduates, external attractivity)</p> <p>Employability: 95% graduate degree programs employed after 18 months</p> <p>Vocational training and continuing education: doubling of enrolment. On this particular point, the Burgundy Franche-Comté Federal U goes beyond its original mission and becomes, through the Initiative for Excellence program, a 'universal' resource within our greater region.</p> <p>Doctoral school: 50% increase in the number of PhDs</p> <p>Ranked 1st French university for campus life</p> <p>1st sustainable campus in France: consistent with the ambition of the Initiative for Excellence</p>
4. The powerhouse of a major region	<p>5 excellence clusters</p> <p>Research contracts: 6,5M€</p> <p>Number of start-ups created between 2006 and 2010: 34</p> <p>Public/private laboratories: 1</p>	<p>Deployment of University Hospital Institute (IHU): Autonomy</p> <p>Decarbonised Energies Cluster (IEED) and Mutualized Innovation Platform (PFMI)</p> <p>Technology Transfer Acceleration Society (SATT) (Industrial Property issues, business incubation and maturation), including contractual research</p> <p>Business incubation reinforced within the Technology Transfer Acceleration Society (SATT)</p> <p>Interregional Technopole deployment</p>	<p>World-ranking clusters</p> <p>New clusters: including a gerontopole</p> <p>30% Increase in research contracts</p> <p>x5 Multiplication of public-private laboratories</p> <p>Number of created businesses: 70</p> <p>A new regional image: sustainable and modern agriculture combining biodiversity health and well-being through food</p> <p>high-technological level secured industries (energy, mechanical engineering, automotive)</p> <p>Impact assessment for the greater region by the Pergaud Experimental Laboratory: Human impact and territorial sustainability</p>
5. Competing with the major regions in Europe	<p>5000 international students</p> <p>170 co-supervised PhD theses</p>	<p>Co-supervision scholarships</p> <p>International Researchers Residence</p> <p>International curricula in all areas of training</p> <p>Deployment of language centers: French as a Second Language (FLE) and foreign languages</p> <p>Institutional partnership with the Lausanne Federal Polytechnic School (EPFL)</p> <p>International Student Hall</p>	<p>Co-supervised theses: x2 (340)</p> <p>International students: 20%</p> <p>1/3 international profiles/hiring of teaching-research staff</p> <p>International campus locations: China, Southeast Asia...</p> <p>Export of the Burgundy Franche-Comté Federal U brand</p>

Table 8: The trajectory and indicators of our initiative of excellence



5. RESOURCES

5.1. The concentration of resources for activities organised as structural actions

This project is part of an approach to organise five clusters of excellence started in 2007 in the framework of building the PRES, an approach further impelled by the publication of calls for Investment in the Future projects:

- Smart and secured systems;
- Materials and energies of the future;
- The environment and territories;
- Agroecology and healthy food ;
- Biotechnologies and health.

These five clusters form the basis for building the entire strategy behind the response to the call for projects and which shape the present application for the call for "Initiatives of Excellence". This application is organised as actions that define the perimeter of excellence on the one hand, and as projects intended to set up and develop the interfacing and propagation actions described in part II "Perimeter of excellence, projects, perspectives".

Development actions of the perimeter of excellence

- EquipEx;
- LabEx;
- SATT;
- the IEED project;
- The Carnot Institutes;
- The development of a scientific and technical culture and equal opportunities.

Interfacing and propagation actions

- Pedagogy of Excellence;
- Internship of Excellence;
- Learning and continuing training;
- Contribution to the quality of life on the campuses – setting up an e-network;
- Setting up a learning centre;
- Cyber university and strengthening intensive calculation resources;
- Strategy of international influence and attraction;
- Sustainable campuses;
- Support actions:
 - A policy of visibility;
 - Governance.

These actions will be grouped into three main themes that define and structure the project's strengths and to which will be added a theme dedicated to transversal actions (cf. diagram below):

- The "Research-transfer-exploitation" theme;
- The "Education" theme;



- The "Student and campus life" theme;
- Transversal tools and actions.

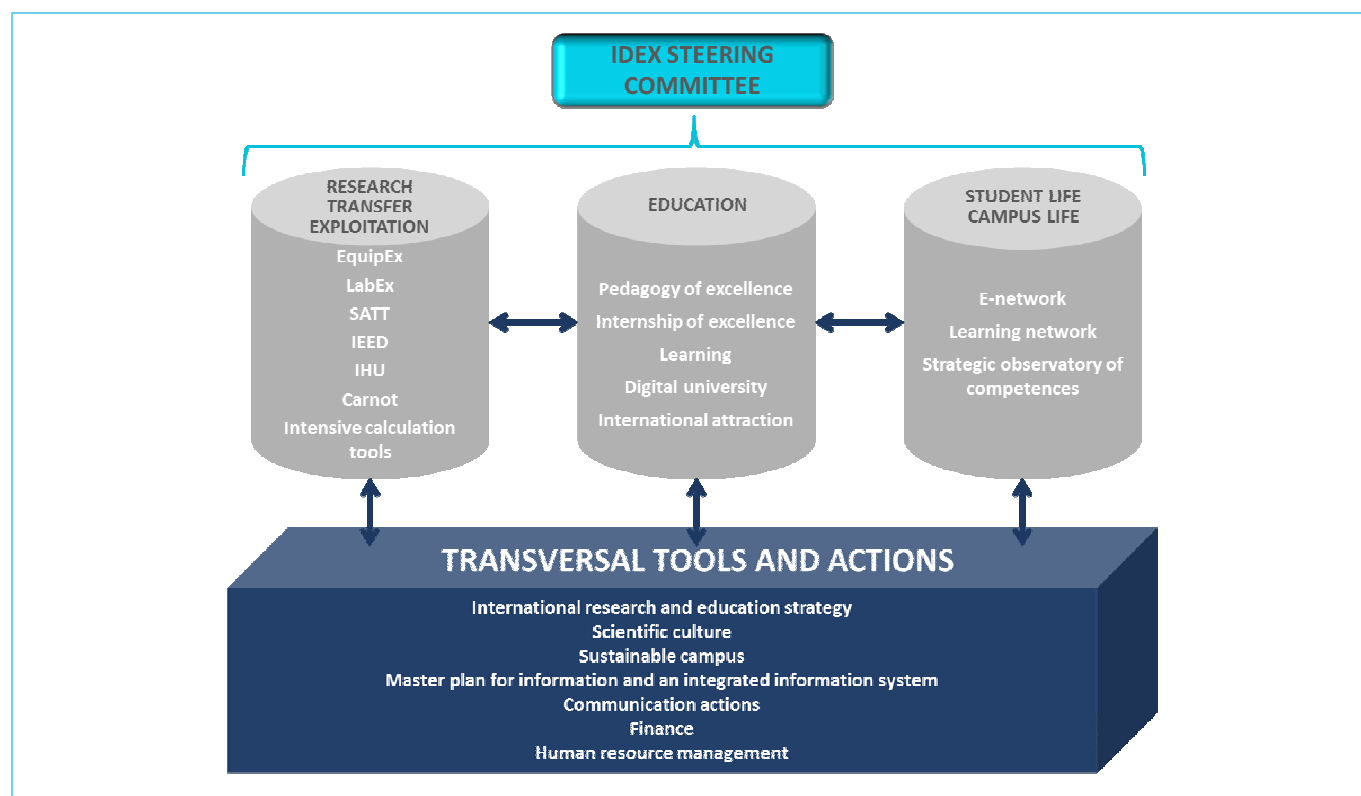


Figure 9: IDEX functional organisation

5.2. A Human Resources policy to attract talents and recognize their work (teacher-researchers, junior and senior researchers)

With the Initiative for Excellence, we will adopt a policy of recruitment and HRM to attract the best researchers and faculty and empower them to deploy their talents through:

- The publication of international posts at similar clusters of excellence abroad
- The establishment of a relocation package (office, logistics, starter fund to finance their research, doctoral students and post-docs)
- The creation of Chairs for short and medium terms (3-5 years) on the projects of excellence in order to attract international researchers and young talent
- The granting of bonuses awarded for scientific excellence to the holders of Chairs.
- The detection and training of future scientific managers.

Beyond what is provided for in the LabEx, we are planning on the creation of a dozen Chairs in the next 4 years, especially on interdisciplinary projects linking the LabEx and the clusters, and within 10 years, 50 to 80 international researchers will have held a Chair through the PRES Bourgogne Franche-Comté.



5.3. A project consistent with procedures of obtaining additional finance

The resources demanded by virtue of the call for IDEX projects, organised around clearly identified actions, are not intended to replace other forms of finance obtained, especially in the framework of calls for national and international projects.

Moreover, the actions of the Initiative of Excellence (including the LabEx) are part of an effort to obtain additional resources and which relies, for example, on the calls for projects launched by the Agence Nationale de la Rénovation Urbaine (internship of excellence) and on the priority projects that will structure the forthcoming State-Region Contract Project.

Resources contributed by the founders and partners of the PRES Bourgogne Franche-Comté

For each LabEx or Initiative of Excellence file, the founders and local authorities are committed to providing human or financial resources (notably for property). Chairs, allocations for PhDs, post-doctoral students and funds for additional projects in the framework of calls for projects specific to the Fondation de Coopération Scientifique fall within the framework of these additional funds.

€1 from local actors for €1 from the State

Furthermore, the local authorities, clusters and partners companies of the PRES undertake to contribute €1 for every €1 (excluding Labex funds) contributed by the State in the framework of the Initiative of excellence (cf. letters of support in appendix 3).



Distribution of resources (in millions euros)

Research, transfer, exploitation

Name of action	Resources					Expenses				
	IdEx	OtherAAP Inv. Future	Contribution of establishments	Externalresources	Total	Investment		Operation	Personnel	Total
						Equipment	Property			
Equipex - Clovis	-	7.37	5.97	1.34	14.68	5.22	-	1.38	8.08	14.68
Equipex-Digital Resource Centre	-	2.30	0.62	0.07	2.99	0.24	-	0.30	2.45	2.99
Equipex - IMAPPI	-	9.54	9.40	1.01	19.95	5.50	-	5.79	8.66	19.95
Equipex - MetaMat	-	20.58	20.93	3.78	45.29	16.01	-	12.86	16.42	45.29
Equipex - NCIPC	-	10.50	10.61	8.13	29.24	12.92	-	7.07	9.25	29.24
Equipex - RegionalObservatory	-	14.63	16.73	-	31.36	1.43	-	5.30	24.63	31.36
Equipex - Oscillator IMP	-	4.48	1.70	-	6.18	2.06	-	1.96	2.16	6.18
Equipex - EnergyEfficiency Transport (2011)	-	-	-	-	-	-	-	-	-	-
Equipex - DIPEE (A04E) (2011)	-	2.10	4.41	7.58	14.09	2.11	4.00	-	7.98	14.09
Labex - C2SMIM	10.72	9.41	30.28	11.56	61.97	18.51	-	12.07	31.39	61.97
Labex - Anthropisation	31.91	14.63	202.64	-	249.18	16.60	-	49.78	182.80	249.18
Labex - Action	14.79	30.24	56.69	47.40	149.12	21.12	-	30.80	97.20	149.12
Labex - Nutrition Health (2011)	10.00	-	50.00	5.00	65.00	-	-	15.00	50.00	65.00
Labex - Agro-environment (2011)	10.00	-	50.00	5.00	65.00	-	-	15.00	50.00	65.00
Health-Biotech- Nanobioresources	-	49.88	13.10	-	62.98	21.10	-	17.36	24.52	62.98
Dispositif IHU	6.35	-	10.49	6.07	22.91	3.60	-	6.00	13.31	22.91
IEED -solar fuels (2011)	-	-	-	-	-	-	-	-	-	-
SATT	-	66.00	-	-	-	-	-	44.00	22.00	66.00
Intensive calculationtools	5.20	1.00	7.57	3.53	17.30	6.21	2.50	4.37	4.22	17.30

Figure 10: Means, distribution, transfer, exploitation

Education

Name of action	Resources					Expenses				
	IdEx	Other AAP Inv. Future	Contribution of establishments	External resources	Total	Investment		Operation	Personnel	Total
						Equipment	Property			
Pedagogy of excellence	27.19	-	0.11	6.25	33.55	-	6.25	8.10	19.20	33.55
Internship of excellence	14.60	12.00	1.32	9.85	37.77	0.86	15.32	16.38	5.21	37.77
Learning and continuing training	0.95	-	1.32	0.79	3.06	-	-	0.15	2.91	3.06
Attractivity and Human Resources	7.92	-	-	13.77	21.69	-	-	1.15	20.54	21.69

Figure 11: Distribution of training means

Student and campus life

Name of action	Resources					Expenses				
	IdEx	Other AAP Inv. Future	Contribution of establishments	External resources	Total	Investment		Operation	Personnel	Total
						Equipment	Property			
E-network	0.68	-	0.27	0.25	1.20	-	-	0.17	1.03	1.20
Learning centre	10.30	-	18.95	51.71	80.96	9.32	34.74	18.90	18.00	80.97
International strategy in research and education	2.00	-	-	-	2.00	0.03	-	0.025	1.95	2.00
Sustainable campus	-	-	2.45	-	2.45	-	-	-	2.45	2.45

Figure 12: Distribution of means devoted to student and campus life

Transversal tools and actions

Name of action	Resources					Expenses				
	IdEx	Other AAP Inv. Future	Contribution of establishments	External resources	Total	Investment		Operation	Personnel	Total
						Equipment	Property			
Communication and image projection	5.07	-	-	-	5.07	0.05	-	3.44	1.58	5.07
Governance of the IdEx	2.58	-	-	-	2.58	-	-	1.00	1.58	2.58

Figure 13: Distribution of means – tools and transverse actions

The procedure for allocating resources

The management of credits allocated by virtue of the "Investment in the Future" project, and in particular of those intended to support the Initiative of Excellence will be ensured by the *Fondation de Coopération Scientifique* in order to guarantee that they are distinct from the resources allocated from elsewhere to the different actors involved.

An ad hoc budgetary and financial structure will be set up in the *Fondation de Coopération Scientifique* to manage the Investments in the Future projects. It will use an analytical accounting system to perform regular analyses of budgetary actions in relation to the specific objectives of each entity.

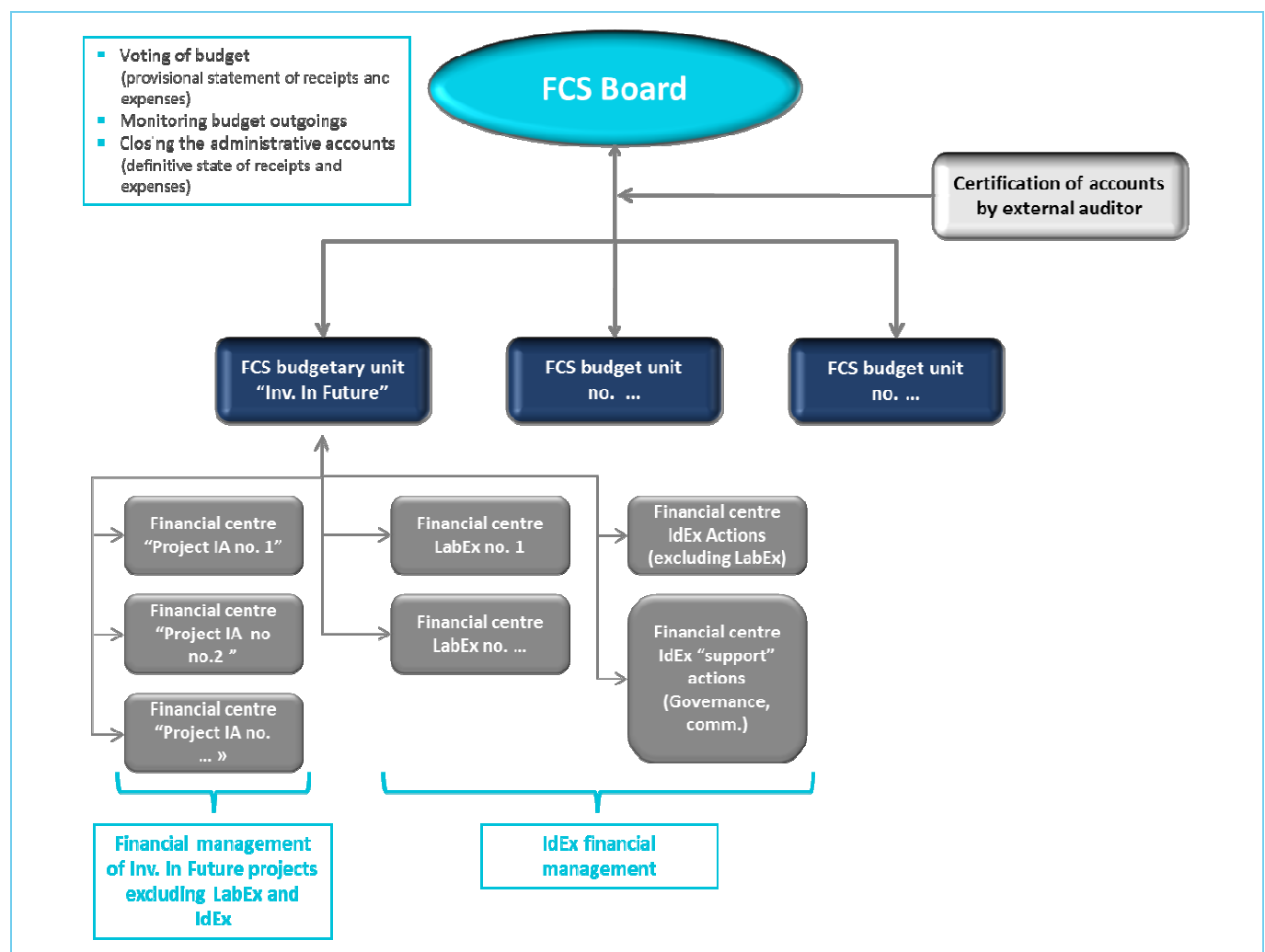


Figure 14: IDEX financial organisation



Table 1 : 10-year cumulative IDEX resources and expenditures related to the perimeter of excellence (in millions euros)

Nom de l'action	Ressources				Dépenses		
	Subvention IDEX	Autres subventions Investissements d'Avenir	Apport des établissements partenaires sur leur budget propre	Ressources externes	Investissements dont immobilier	Fonctionnement	Personnel
Equipex - Clovis		7.37	5.97	1.34	5.21	1.38	8.08
Equipex - Centre Ressources Numériques	0	2.30	0.62	0.07	0.24	0.31	2.45
Equipex - IMAPPI	0	9.54	9.40	1.01	5.50	5.79	8.66
Equipex - MetaMat		20.58	20.93	3.78	16.01	12.86	16.42
Equipex - NCIPC		10.50	10.61	8.13	12.91	7.07	9.25
Equipex - Observatoire des Territoires	0	14.63	16.73	0	1.43	5.30	24.63
Equipex - Oscillator IMP	0	4.48	1.70	0	2.06	1.96	2.17
Equipex - Efficacité énergétique transports (2011)							
Equipex - DIPEE (A04E) (2011)		2.10	4.41	7.58			
Labex - C2SMIM	10.72	9.41	30.28	11.56	18.51	12.07	31.39
Labex - PERGAUD	31.91	14.63	202.64		16.59	49.78	182.80
Labex - Action	14.79	30.24	56.69	47.40	21.13	30.80	97.20
Labex - Nutrition Santé	10.00			5.00			
Labex - Agroenvironnement	10.00			5.00			
SantéBiotech - Nanobioressources		49.88	13.10	0	21.10	17.36	24.52
IEED - carburants solaires							
dispositif IHU	6.35	0	10.49	6.07	3.60	6.00	13.31



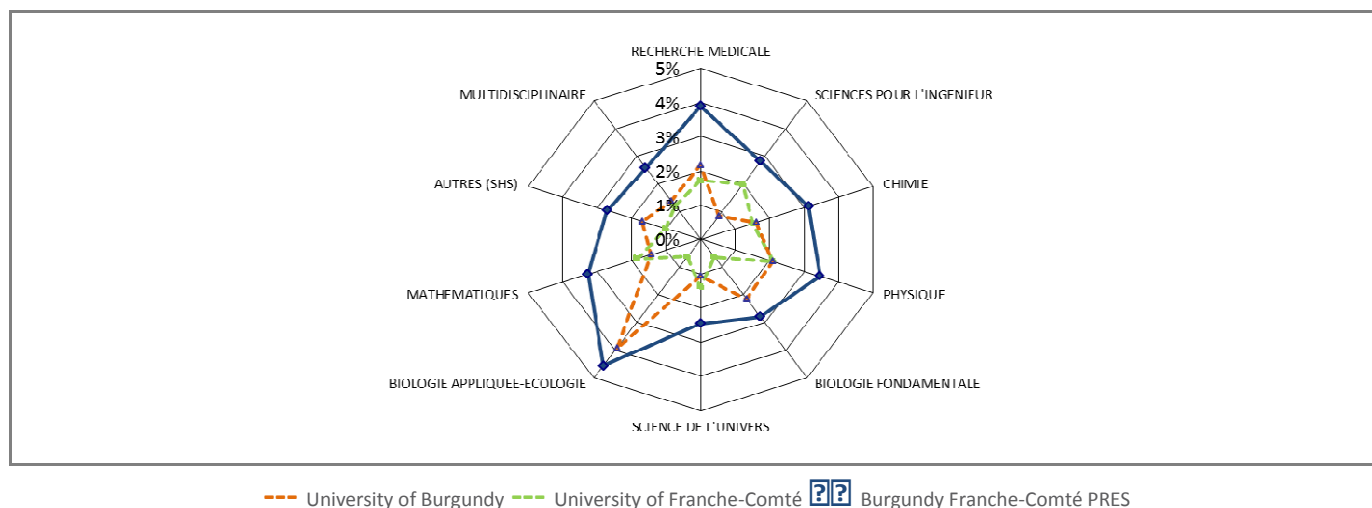
Table 2 : 10-year cumulative IDEX resources and expenditures for other actions (*in millions euros*)

Nom de l'action	Ressources				Dépenses		
	Subvention Idex	Autres subventions Investissements d'Avenir	Apport des établissements partenaires sur leur budget propre	Ressources externes	Investissements dont immobilier	Fonctionnement	Personnel
Excellence and education	27.19	0	0.11	6.25	6.25	8.09	19.20
Residence of success	14.60	12.00	1.32	9.85	16.18	16.39	5.21
Training and continuing education	0.95	0	1.32	0.79	0	0.15	2.91
E-network	0.68	0	0.27	0.25	0	0.17	1.03
Learning center	10.3	0	18.95	51.71	44.06	18.91	18.00
For sustainable campus	0	0	2.45	0	0	0	2.45
international and hospitality	2.00	0	0	0	0.03	0.025	1.94
Computational tools for intensive calculation	5.20	1.00	7.57	3.53	8.71	4.37	4.21
Attractivity and Human Resources	7.92			13.77	0	1.15	20.54
Communication and lightning	5.07	0	0	0	0.05	3.43	1.58
Governance of Idex	2.58	0	0	0	0	1.00	1.58



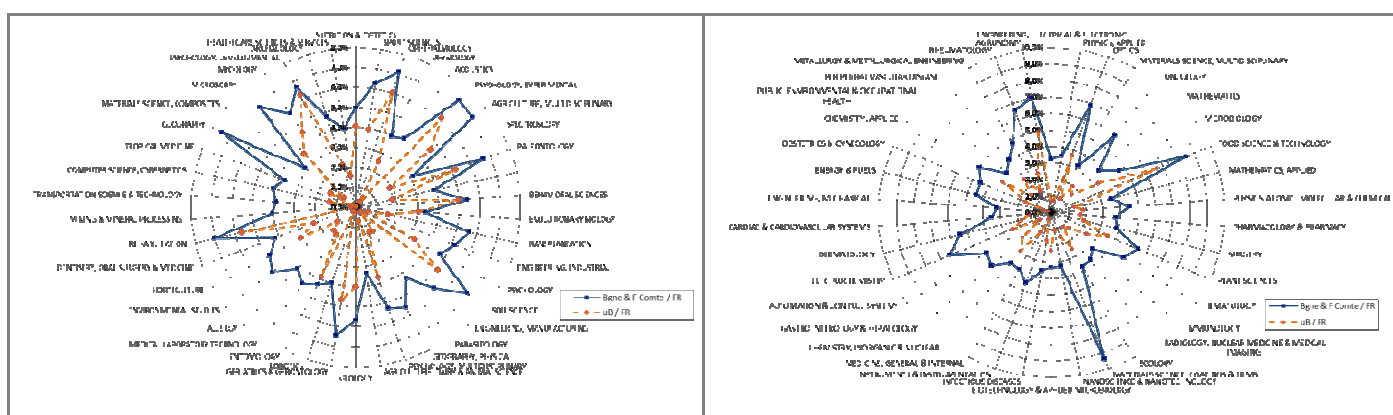
APPENDIX 1: POSITIONING IN TERMS OF RESEARCH

Disciplinary Positioning of the PRES



The above chart illustrates the complementarities and potential synergies of the two regions, particularly evident in biology and engineering. The joint disciplinary profile of the two regions is remarkably close to the national profile.

Thematic Positioning of the PRES



The above graphs represent the thematic profile of the University of Burgundy with reference to the joint profile of the Burgundy and Franche-Comté regions. They include the themes for which the "Universities of Burgundy and Franche-Comté" contribute at least 3.1% of the national production.



APPENDIX 2: OUR INVESTMENT FOR THE FUTURE PROJECTS

List of the Laboratories of Excellence (LabEx)

Pole Of Excellence	Project Title	Project Support	Research Units Involved	Related Projects
Environment & Territories	Human impact and territorial sustainability (PERGAUD)	H. Richard (UFC)	Chrono-environnement, CESAER, Thema, LEG, Artéhis, CGC, MSH, MSHE, Bibracte	OdT CRNT
Smart systems	Smart structures and security (ACTION)	M. De Labachellerie (UFC)	FEMTO (UFC, ENSMM, CNRS), ICB (UB-CNRS), LNIO (UTT-CNRS)	METAMAT CLOVIS Oscillator-IMP RENATECH ROBOTEX
Biotech & Health	Chemistry and computer science for the development of multimodal imaging (C2SMIM)	F. Denat (uB)	ICMUB (UB-CNRS), LE2i (UB-CNRS), ICB (UB-CNRS), UTINAM (UFC)	IMAPPI NCIPC
Agroecology & Healthy Food	Agroecology / biodiversity / food and sensory sciences / nutrition / health	Ph Lemanceau		AO4E (2011)
Agroecology & Healthy Food / Biotech & Health	Nutrition and health (IHU project)	L. Lagrost		

The fact sheets concerning the LabEx are available upon request.

Table 17: List of LabEx projects

List of the Health-biotech infrastructure projects

Pole Of Excellence	Project Title	Project Support	Research Units Involved	Partners
Biotech & Health	NanoBioressources (2010)	A. Dereux (uB)	ICB, FEMTO, U645, U846	CGFL, EFS, UB, UFC, CRB (CHU), CNRS, Inserm
Agroecology & Healthy Food / Biotech & Health	PHENOME - Infrastructure distribuée - Nœud n°2 (INRA-Dijon) « Phénotypage haut débit » (2010)	C. Salon (INRA)	PME, BGA, LEGumineuses, MSE, SED	uB, AgroSup Dijon

Table 18: List of the infrastructure projects



List of EquipEx

Pole Of Excellence	Project Title	Project Support	Research Units Involved	Partners
Smart systems	CLOVIS : UHV cluster for nanofabrication and characterization of nanostructured components investigated in specific environments (2010)	N. Martin (UFC)	FEMTO, ICB	Institut des Microtechnologies Appliquées de la Haute Ecole ARC Ingénierie, THALES Electron Devices
Smart systems	Oscillator IMP : Oscillator Instability Measurement Playground (2010)	E. Rubiola (UFC)	FEMTO, OSU-THETA/UTINAM	
Smart systems	MIND: Micro and Nanotechnologies Development - National Nanofabrication Network Development (2010)	A. Cappy (CNRS)	CEA-LETI, FEMTO, FMNT, IEF, IEMN, LAAS, Paris centre, Nano Rennes, CTS Lor-AI, Nano Lyon, Nanofab, CT PACA, CTM, SPEC	
Smart systems	Robotex : National network of robotics platforms (2010)	M. de Mathelin	FEMTO, ETIS, GIPSA-lab, Heudiasyc, IRCCyN, Institut des Sciences du Mouvement, LAAS-CNRS, LASMEA, LIRMM, IRCAD-LSIT, SP2MI - Téléport 2, TIMC-UJF	CNRS/INSIS, INRIA Rennes Bretagne Atlantique, UPMC
Materials & Energy	METAMAT : Metallurgy, Corrosion, Processes : Interactions and Life cycle (2010)	D. Grevey (uB)	ICB, FEMTO, LE2I, LaBoMap, LERMPS, CIMEOS, RECITS,	CEA, Welience
Biotech & Health	IMAPPI : Integrated Magnetic resonance And Positron emission tomography in Preclinical Imaging (2010)	F. Brunotte (uB)	ICMUB, ICB, NCM/UTINAM, LE2I	GIE Pharmimage, Bioscan, Welience, CheMatech, Oncodesign, CHU Dijon, NVH-Medicinal, CGFL
Biotech & Health	NCIPC : Centre of Preclinical Investigations of the Science institute for self-sufficient behaviour (2010)	T. Gharbi (UFC)	FEMTO, UTINAM, IFR 133, LPCR-AC, I4S,	CIT 808 (CHU Besançon/INSERM), DETEC ECUTIS, IMACISIO
Environment & Territories	ODT : Territorial Dynamics Observatory (2010)	F. Favory (UFC)	MSH-E, MSH Dijon, LSH, ThéMA, Chrono-Environnement, LEG, ARTÉHIS, CESAER	
Environment & Territories	CRNTA2SIS : Thematic Digital Data Center "Archives, Ideas, Pictures & Societies" - Bourgogne Franche-Comté (2010)	S. Wolikow (uB)	MSH Dijon, MSH-E, Centre G. Chevrier, ARTÉHIS, CESAER, LE2I, ATST, LASELDI	
Environment & Territories / Agroecology & Healthy Food	Analyse, Observation, Expérimentation en Ecologie, Environnement, Evolution (2011)			
Materials & Energy	High energetic efficiency of transport (2011)			
Transversal	Mesocentre (2011)			

Table 19 : List of EquipEx



List of public-private institutes of excellence

Pôle d'excellence	Intitulé du projet	Porteur de projet	Unités de recherche impliquées	Partenaires
Smart structures	Plateforme mutualisée d'innovation - intelligent and secure structures (SIS)	M. De Labachellerie (UFC)	ICB, FEMTO, LE2I	Alstom, Areva, PSA, SEB, Pôle Nucléaire Bourgogne, Pôle des Microtechniques, Vitagora, Véhicule du futur, Plastipolis,...
Materials & Energy	IEED – Solar Fuels	R. Guillard (uB)	ICMUB, EPFL, ENS, Collège de France, ENSCP, CNRS	Air Liquide, Pôle Nucléaire Bourgogne, cluster Wind4futur
Biotech & Health	Dispositif d'IHU (IdEx operation)			uB, UFC, CHU Dijon, CHU Besançon, CGFL, EFS, ENSMM, AgroSup
Smart systems	Carnot - FEMTO - UT	M. De Labachellerie (UFC)	FEMTO, ICD	
Smart systems / Materials & Energy	Carnot- ARTS	J-P. Hautier (A&M ParisTech)	ICB, LE2i, A&M ParisTech,...	
Agroecology & Healthy Food / Biotech & Health	Carnot - Qualiment	C. Esnouf (INRA)		uB, AgroSup Dijon, CNRS, INRA, Université d'Auvergne, Welience
Transversal	SATT			PRES BFC, PRES UdL, UTT, UTBM, CNRS

Table 20: List of public-private of excellence



APPENDIX 3: LETTERS OF SUPPORT



LETTER OF SUPPORT

for the Initiative of Excellence candidacy of the Burgundy Franche-Comté PRES

Our Regions have unfailingly supported our two universities since 2000. Our bi-regional cooperation on major structuring projects has therefore been in place for some time now.

We have been unwavering supporters of our five competitiveness clusters by encouraging them to act bi-regionally.

From the beginnings of the Burgundy and Franche-Comté PRES, both regions have provided technical and financial support for a great Federal University in Burgundy and Franche-Comté.

It is this fertile ground that has nourished the candidacy of the Burgundy and Franche-Comté PRES for the Initiative of Excellence.

To be faithful to all of our previous commitments and to continue the work in hand, our Assemblies have made the decision to ring-fence higher education and research budgets to ensure perennial financial support.

Beyond the aid already reserved for other projects, each of our two regions is prepared to allocate 5 million euros per year to Initiative for Excellence projects. Many companies, all competitive clusters, and other involved institutions, will be asked to provide an equivalent amount, bringing to 15 million euros the contribution of regional partners, that is to say, roughly the equivalent of the capital income requested from the General Commission on Investment (excluding Labex foudings).

Should this Humanticipation project be selected and the Initiative of Excellence label awarded, there will result a structuring effect on the overall economic development policy of our interregional area. That is why the General Commission on Investment can count on the full support of our two regions and on our personal commitment to the success of the Burgundy Franche-Comté Initiative for Excellence project, thus enhancing the quality of research and the attractiveness of higher education for our businesses, our regions and our country.

January 5th 2011

Marie-Guite Dufay
Présidente de la Région
Franche-Comté

François Patriat
Président de la Région Bourgogne







Letter of Support for the Initiative of Excellence candidacy of the Burgundy Franche-Comté PRES

Our towns and cities have unfailingly supported each of our universities since 2001. Inter-regional cooperation on major structural projects is thus well-established by now. We have also jointly supported our five competitiveness clusters, encouraging them to act together.

From the beginnings of the Burgundy Franche-Comté PRES, we have supported this initiative for a large Federal University in Burgundy and Franche-Comté.

It is therefore in this fertile soil that the candidacy of the Burgundy Franche-Comté PRES in the framework of the Initiative of Excellence has been able to take root.

The structure of the Burgundy Franche-Comté PRES is characterised by its multipolarity, each of our cities hosting one or more of our PRES institutions. For our cities and towns, this represents an asset in terms of economic attractiveness.

All of us, mayors and presidents of urban areas, speak with one voice when we say that we will support both our universities and our two regions to ensure the success of the Initiative of Excellence candidacy. There is no doubt in our minds that it will play a major role in the future of our cities and our towns over the next thirty years.

Dijon
Grand Dijon
François Rebsamen, mayor and president

Grand Besançon
Jean-Louis Fousseret, president

Agglomération de Montbéliard
Pierre Moscovici, président

Communauté du Creusot Montceau
Jean-Claude Lagrange, president

Grand Chalon
Christophe Sirugue, president

Agglomération de Nevers
Didier Boulaud, president

Auxerre
Guy Ferez, mayor



Letter of Support for the Initiative for Excellence candidacy of the Burgundy Franche-Comté PRES (Pole of Research and Higher Education)

Since 2005, our competitiveness clusters have managed to create strong research and transfer dynamics between the universities of Burgundy and Franche-Comté and our businesses. This dynamic has also enabled us to further exemplary cooperation between companies of similar size, and between international groups and SMEs.

We have achieved this through the work of the highest quality carried out daily with the governing bodies of our two regions' universities, and with all the researchers associated with the 427 research programs launched since 2005. During this period, we have developed, more than anywhere else in France, strong inter-regional cooperation. This cooperative practice has made possible, at short notice, the active participation of all (researchers, companies, and local government) in the elaboration of our candidacy application.

Vitagora
Pierre Guez, president



Nuclear Cluster of Burgundy
Gérard Kottmann, president



Vehicle of the Future Cluster
Georges Lammoglia, president



Microtechnics Cluster
Etienne Boyer, president



Plastipolis
Daniel Goujon, president



Dijon Céréales
Pierre Guez, director



Seb
Philippe Crevoisier, president



Eurogerm
Jean-Philippe Girard, president



Sediag
Sam Seddas, president



Valinox Nucléaire
Gérard Kottman, CEO



Oncodesign
Philippe Genne, president





More than 1,000 companies representing more than 100,000 jobs are placing great hopes in the selection of Burgundy and Franche-Comté for the Initiative of Excellence plan.

As we must also participate in its funding, we will contribute through joint investment in IDEX research programs and by providing operating funds for the Scientific Cooperation Foundation (FCS), so that collectively, with our 2 regions, we can provide 15 million Euros per year, or one euro for every euro, to complement the capital income provided by the General Commission for Investment under the "Grand Emprunt" public investment plan.

In 2011, the selection of our project and the award of the "Excellence Initiative" label would serve as a final catalyst to the dynamic that is already well under way and would give France a centre of global excellence which would foster the economic development of our businesses, of our greater region and the dynamic export capacity of our country.

**Les présidents des pôles de compétitivité,
et les 27 chefs d'entreprises participant au cofinancement IDEX**

**Caisse d'Epargne Bourgogne
Franche Comté**
Alain Maire, president



Crédit Agricole
François Mace, CEO



Société Générale
Guy Daussin, regional director



Caisse des Dépôts
Aline Morancho, regional director



Alstom Transport
Olivier Loison, general
manager Ornans unit



Laboratoires Urgo
Laurent Apert, research
director

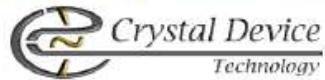


Schrader International
Benoît Gresset, research
and innovation manager



Dixi Microtechniques
Jean-Pierre Darnis, dirigeant





Stattice, Studies and Development
Benoît Studlé, General manager



C&K Components
Jean-Christophe Villain, Director of innovation



Sensor
Gerhard Heider, CEO



Optec Industries
Christophe Dufresne, president



Horiba Jobin-Yvon
Olivier Acher, Director of innovation



Crystal Design Technology
Marc Bouvrot, president



Silmach
Patrice Minotti, president



Aurea Technology
Johann Cussey, president



Other companies and start ups of our two regions also support the Bourgogne Franche Comté PRES Initiative of Excellence such as :

IMASONIC
Gérard FLEURY
Président d'IMASONIC SAS

CRYLA
LA SOLUTION MONÉTAIRE
Pour l'entreprise CRYLA
Thierry BISIAUX
Président
CRYLA SAS
10, rue de la République
21000 DIJON
03 80 42 88 41
www.cryla.fr

Ma Hy Tec
Matériaux Hydrogène Technologie
Nom de l'entreprise : MAHYTEC
Nom du signataire : Dr P. Robinet, Gérant
Signature :
Date : 05/01/2011
MAHYTEC
210 Avenue de l'Industrie 21100 DIJON
Tél : 03 84 52 55 40 - Fax : 03 84 62 88 41
SARL AU CAPITAL DE 44 000 €
SIRET 544 531 825 00018 LE SAUTERRE

TROD MEDICAL
André Faure, general manager

STATICE Santé
INDUSTRIE BIOMÉDICALE
Serge Piranda
Président Directoire
Groupe STATICE

ImaCisio
Du Y au B
Fait à Besançon le 05-01-2011
BAKKALI Aboubakar
Président ImaCisio SAS

SOLVAY
SOLVAY ELECTROLYSE France
Usine de Tavaux
38500 TAVAU
Le Directeur,
Alessandro MALVALDI

svez
environnement
L'association des Eaux
Didier Demongeot, regional director

faurecia
Thierry Péra, R&D Mechatronics –
Electrical Motors Expert

covalia
Simple and reliable
COVALIA
Eric Garcia
Le 4/01/2011

Photline
TECHNOLOGIES
Delivering Modulation Solutions
Henri Porte
PDG

Madame Sophie BEJEAN
Présidente
Université de Bourgogne
Maison de l'Université
Esplanade Erasme
BP 27877
21078 DIJON cedex

Paris, le 6 janvier 2011



Chère collègue,

Nous avons pris connaissance avec beaucoup d'intérêt de votre projet d'initiative d'excellence (IDEX) dans le cadre de l'appel à projets des investissements d'avenir. Nous sommes impressionnés par l'ensemble du travail de réflexion, de mise en cohérence des forces en présence, ainsi que par la qualité de la prospective qui ressort de votre dossier.

Votre projet correspond à notre vision de la structuration territoriale de la recherche publique de notre pays. Nous souhaitons nous aussi l'émergence dans des délais rapprochés et raisonnables *d'universités de recherche* dont notre pays a besoin.

C'est pourquoi, le CNRS a décidé de vous apporter son soutien, d'être partenaire de votre projet et sera heureux de participer à la structure de pilotage scientifique de votre initiative d'excellence. Nous vous souhaitons bonne chance dans vos projets.

Je vous prie de croire, chère Collègue en l'expression de mes sentiments très cordiaux.



Alain FUCHS





Inserm

Institut national
de la santé et de la recherche médicale

Le Président-directeur général

101, rue de Tolbiac
75654 Paris Cedex 13
Tél. : +33 (0)1 44 23 60 64
Fax : +33 (0)1 44 23 60 65
E-mail : janine.gaudinot-gomez@inserm.fr

Dossier suivi par :

Mme Elli Chatzopoulou
Responsable
Pôle Partenariats et Politique de site
Département des Partenariats
et des Relations extérieures
Tél. : +33 (0)1 44 23 63 24
Fax : +33 (0)1 44 23 60 15
E-mail : elli.chatzopoulou@inserm.fr

N/réf. EC/im 2011-17

Madame Sophie Béjean
Présidente
Université de Bourgogne
Esplanade Erasme
BP 27877
21078 Dijon Cedex

Paris, le 6 janvier 2011

Objet : Appel à projets « Initiatives d'Excellence » des Investissements d'Avenir

Madame la Présidente,

J'ai pris connaissance avec beaucoup d'intérêt de la candidature que vous allez soumettre dans le cadre de l'appel à projets « Initiatives d'Excellence » des Investissements d'Avenir, pour laquelle vous avez sollicité l'Inserm. Conscient de l'effort important de structuration de la recherche que vous avez impulsé, je tiens à vous féliciter de la qualité du travail effectué.

Les sciences de la vie et de la santé constituent un axe prioritaire de votre projet. L'Inserm a par conséquent vocation à y être pleinement associé et vous apporte tout son soutien.

A ce titre, l'Inserm est prêt à s'impliquer en participant au conseil d'Administration de la Fondation de Coopération Scientifique, ainsi que dans le cadre d'une gouvernance resserrée, représentée par le Comité de Pilotage pour lequel vous nous sollicitez.

Votre projet s'inscrit pleinement dans le cadre du partenariat renforcé entre les universités et les organismes de recherche, qui permettra aux laboratoires les plus performants de répondre aux nouveaux enjeux des sciences de la vie et de la santé, de renforcer des approches pluridisciplinaires, d'interagir plus fortement avec la formation des étudiants et de s'inscrire ainsi avec les meilleures chances de succès dans la compétition internationale. Je vous renouvelle le total soutien de l'Inserm et notre volonté de relever avec vous ce défi majeur pour l'enseignement supérieur et la recherche.

Vous souhaitant bonne chance dans vos projets, je vous prie d'agréer, Madame la Présidente, mes salutations cordiales.




Pr. André Syrota
Président-directeur général

Copie :
M. Block, délégué régional de l'Inserm



IDE

	IDEX/ CALL FOR PROPOSALS 2011	HumAnIndex
---	--	-------------------

Acronym of the project	HumAnIndex
Project title	<i>Humanticipation</i> <i>Ecotechnologies to improve life and the environment</i>
Project coordinators	Prof. Sophie BÉJEAN, Présidente, Université de Bourgogne Prof. Claude CONDÉ, Président, Université de Franche-Comté
Requested funding	550 M€
Competitvity clusters	<input checked="" type="checkbox"/> smart systems; <input checked="" type="checkbox"/> environment and territories; <input checked="" type="checkbox"/> biotechnologies and health; <input checked="" type="checkbox"/> agroecology and healthy food; <input checked="" type="checkbox"/> materials and energy for future
Organisation of the coordinating partner	Foundation for Scientific Cooperation (FCS) - PRES Bourgogne Franche-Comté
Organisation of the partner(s)	
FCS Founding members and associate partners	Universités de Bourgogne et de Franche Comté, AgroSup Dijon, Centre Georges François Leclerc, Centres hospitalo-universitaires de Besançon et de Dijon, Ecole Nationale Supérieure de Mécanique et des Microtechniques, Etablissement Français du Sang, CNRS, INSERM, Arts & Métiers ParisTech, INRA, CEA
With the support of (see support letters)	
Socio economic world	Clusters and enterprises Pôle des Microtechniques; Pôle Véhicule du futur; Pôle Nucléaire Bourgogne; Pôle Vitagora; Pôle Plasturgie
Semi-autonomous local and regional authorities	Regional councils and associations of metropolitan areas

